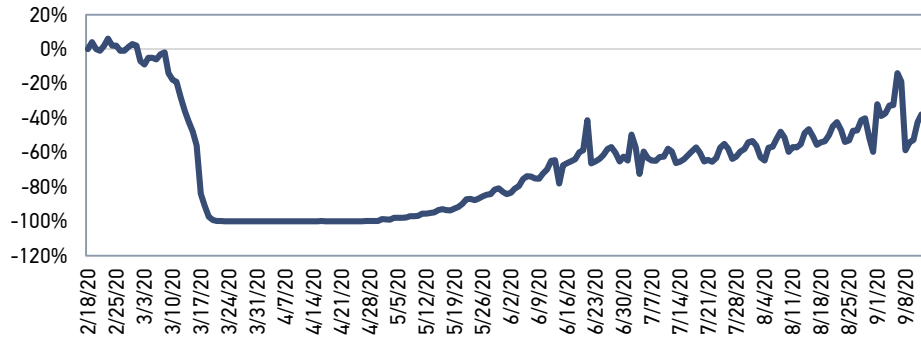




COVID-19 Market Update

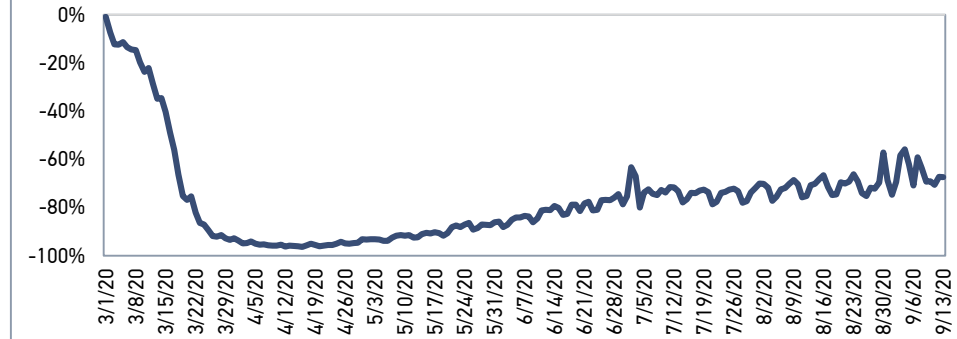
Given many states have begun to ease restrictions prompted by the pandemic, the below charts will be updated on a weekly basis to track and provide timely data on the reopening of the U.S. economy.

U.S. Restaurant Occupancy Year-Over-Year % Change



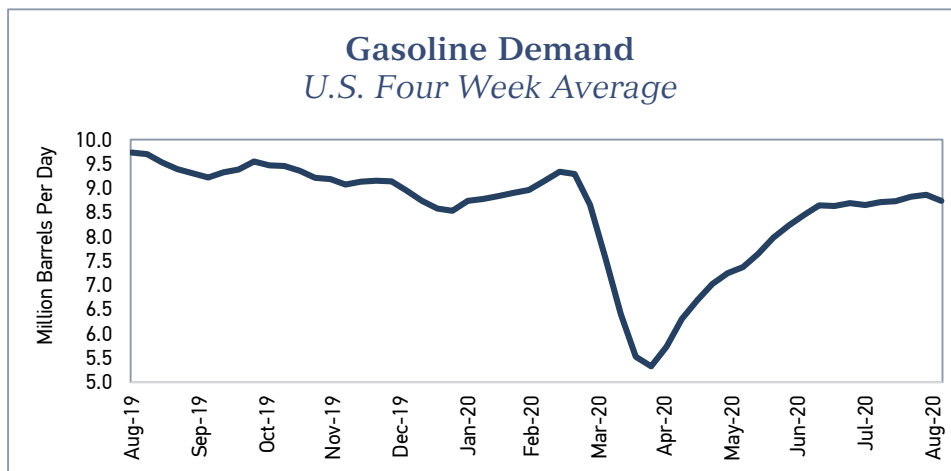
As of 09.13.2020. Source: OpenTable.

TSA Traveler Throughput Year-Over-Year % Change



As of 09.13.2020. Source: U.S. Department of Homeland Security.

Gasoline Demand U.S. Four Week Average



As of 09.04.2020. Source: U.S. Energy Information Administration.



Economic & Market News

This Week:

- U.S. reports scheduled to be released this week include industrial production, retail sales, FOMC announcements, housing starts and consumer sentiment.
- Non-U.S. reports scheduled to be released this week include industrial production and retail sales in China, ZEW economic sentiment and PPI in Germany, balance of trade in Japan and core inflation in the U.K. and E.U.

Week in Review:

- U.S. PPI increased 0.3% month-over-month in August compared to a 0.6% increase in July. Market expectations were for a 0.2% increase.
- U.S. Core CPI increased to 1.7% year-over-year in August from 1.6% in July. Market expectations were for a 1.6% increase year-over-year.
- Germany's trade surplus increased from EUR 15.6 billion in June to EUR 19.2 billion in July. Market expectations were for a trade surplus of EUR 22 billion.
- China's annual inflation rate decreased from 2.7% in July to 2.4% in August. The August reading was in line with market expectations.

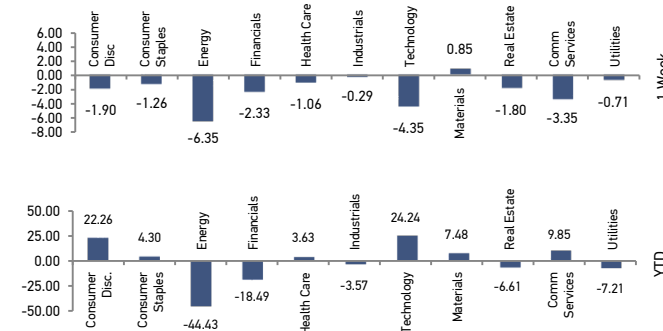
Index Returns	1 Week	MTD	3 MO	YTD
MSCI ACWI IMI	-1.20	-3.15	10.30	0.43
S&P 500	-2.49	-4.50	11.76	4.80
S&P MidCap 400	-2.24	-3.67	7.98	-9.02
S&P SmallCap 600	-3.34	-4.08	9.17	-14.69
MSCI World ex USA	1.27	-0.84	6.95	-5.25
MSCI EM IMI	-0.70	-0.79	11.11	-0.48
Bloomberg Barclays US Aggregate Bond	0.25	0.17	1.08	7.03
Bloomberg Commodity	-1.15	-2.40	11.68	-11.21
DJ Equity All REIT	-2.17	-1.95	3.97	-11.42

Bond Rates	Latest	1 Month Ago	3 Months Ago	6 Months Ago
Fed Funds Target	0.09	0.10	0.08	1.09
2-Year Treasury	0.13	0.17	0.18	0.50
10-Year Treasury	0.65	0.66	0.65	0.82
3-Month LIBOR	0.25	0.25	0.31	0.77
Municipal Bond 10-Year	1.15	0.94	1.35	1.40
U.S. Inv. Grd. Corporate	1.95	1.89	2.27	2.75
U.S. High Yield	5.56	5.32	6.84	7.44

Commodities	Latest	1 Month Ago	3 Months Ago	6 Months Ago
Oil (\$/barrel)	\$37.33	\$41.61	\$36.34	\$32.98
Gold (\$/oz)	\$1,947.90	\$1,946.30	\$1,739.80	\$1,642.30
Gasoline (\$/gallon)	\$1.09	\$1.20	\$1.12	\$1.11

Currencies	Latest	1 Month Ago	3 Months Ago	6 Months Ago
Euro (\$/€)	1.18	1.18	1.14	1.13
Pound (\$/£)	1.28	1.31	1.26	1.29
Yen (¥/\$)	106.20	106.46	106.64	104.85

S&P 500 Sector Returns



S&P 1500 by Capitalization & Style¹

Value Blend Growth	1-Week				Year-to-Date		
	Value	Blend	Growth		Value	Blend	Growth
	-1.61%	-2.49%	-3.05%	Large	-11.01%	4.80%	18.76%
	-3.06%	-2.24%	-1.59%	Mid	-18.20%	-9.02%	-0.51%
	-3.98%	-3.34%	-2.77%	Small	-21.66%	-14.69%	-8.03%

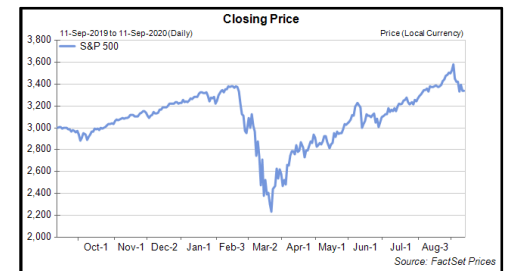
Equity Index Characteristics ²	P/E Ratio (TTM)	P/B Ratio (TTM)	P/CF Ratio (TTM)	Wtd Avg Mkt Cap (billions)
MSCI ACWI IMI	22.09	2.30	11.85	58.14
S&P 500	26.86	3.71	15.47	169.33
S&P MidCap 400	22.33	2.11	10.55	5.38
S&P SmallCap 600	19.93	1.66	7.47	1.64
MSCI World ex US	19.52	1.58	9.38	36.60
MSCI EM IMI	15.50	1.68	9.11	31.78

Date	Locale	Indicator	Forecast		
			Period	Consensus	Last ³
Monday 9-14-20	Eurozone	Industrial Production SA M/M	JUL	4%	9.5%
		Industrial Production SA M/M (Final)	JUL	8%	8%
	China	Industrial Output NSA Y/Y	AUG	5.1%	4.8%
Tuesday 9-15-20	United States	Industrial Production SA M/M	AUG	1%	3%
	United States	Capacity Utilization NSA	AUG	71.6%	70.6%
	United States	Retail Sales SA M/M	AUG	1.2%	1.2%
Wednesday 9-16-20	United States	NAHB Housing Market Index SA	SEP	78	78
	United States	Fed Funds Target Upper Bound	-	0.25%	0.25%
	Japan	Japan Policy Rate	-	-0.1%	-0.1%
Thursday 9-17-20	United States	Continuing Jobless Claims SA	9/5	13,000K	13,385K
	United States	Initial Claims SA	9/12	850K	884K
	United States	Philadelphia Fed Index SA	SEP	15	17.2
	United States	Building Permits SAAR (Preliminary)	AUG	1,500K	1,483K
	United Kingdom	BoE Official Bank Rate	-	0.1%	0.1%
Friday 9-18-20	Eurozone	CPI EU Harmonized NSA M/M	AUG	-0.4%	-0.4%
	United Kingdom	Bank of England Interest Rate	-	-	-
	United States	Announcement, MPC Minutes Publication and Inflation Report	-	-	-
Friday 9-18-20	United States	Michigan Sentiment NSA (Preliminary)	SEP	75	74.1
	United States	Leading Indicators SA M/M	AUG	1.3%	1.4%

10-Year Treasury Note Yields



S&P 500 Index Levels





STERLING
CAPITAL



¹Style boxes are derived from the components of the S&P 1500 Index

²Characteristics as of 08.31.2020

³May include flash/preliminary estimates

Economic & Market News provided by Sterling Capital Management Asset Allocation Committee.

The volatility of an index varies greatly. All indices are unmanaged and investments cannot be made directly in an index.

Past performance is not indicative of future results. Any type of investing involves risk and there are no guarantees.

S&P 1500: An investable U.S. equity benchmark, the S&P Composite 1500 combines three leading indices, the S&P 500[®], the S&P MidCap 400, and the S&P SmallCap 600 to cover approximately 90% of the U.S. market capitalization. It is designed for investors seeking to replicate the performance of the U.S. equity market or benchmark against a representative universe of tradable stocks.

Capitalization/Style Returns: Capitalization/Style returns are based on the S&P Indexes. All values are cumulative total return for stated period including the reinvestment of dividends. The indexes used from left to right, top to bottom are as follows: S&P 500 Value Index, S&P 500 Index, S&P 500 Growth Index, S&P Mid Cap 400 Value Index, S&P Mid Cap 400 Index, S&P Mid Cap 400 Growth Index, S&P Small Cap 600 Value Index, S&P Small Cap 600 Index, S&P Small Cap 600 Growth Index. The S&P 500[®] Index is a readily available, carefully constructed, market-value-weighted benchmark of common stock performance. Currently, the S&P[®] Composite includes 500 of the largest stocks (in terms of stock market value) in the United States; prior to March 1957 it consisted of 90 of the largest stocks. The S&P Midcap 400 is designed to measure the performance of the middle capitalization sector of the U.S. equities market. This market capitalization weighted index was created in June of 1991 and consists of 400 domestic stocks from the NYSE, NASDAQ, and AMEX chosen for market size, liquidity and industry group representation. The S&P SmallCap 600 is designed to measure the performance of the small capitalization sector of the U.S. equities market. This index consists of 600 domestic stocks chosen for market size, liquidity, (bid-asked spread, ownership, share turnover and number of no trade days) and industry group representation. The S&P Style indices measure growth and value along two separate dimensions, with three factors each used to measure growth and value. The Growth factors are 3 Year Change in Earnings per Share over Price per Share, 3 Year Sales per Share Growth Rate, and Momentum. The Value factors are Book Value to price Ratio, Earnings to Price Ratio, and Sales to Price Ratio.

Index Returns: Prices reflect closing price level for each stated date.

S&P 500: The S&P 500[®] Index is a readily available, carefully constructed, market-value-weighted benchmark of common stock performance. Currently, the S&P[®] Composite includes 500 of the largest stocks (in terms of stock market value) in the United States; prior to March 1957 it consisted of 90 of the largest stocks.

S&P Small Cap 600: The S&P SmallCap 600 is designed to measure the performance of the small capitalization sector of the U.S. equities market. This index consists of 600 domestic stocks chosen for market size, liquidity, (bid-asked spread, ownership, share turnover and number of no trade days) and industry group representation.

S&P Mid Cap 400: The S&P MidCap 400 is designed to measure the performance of the mid capitalization sector of the U.S. equities market. This index consists of 400 domestic stocks chosen for market size, liquidity, (bid-asked spread, ownership, share turnover and number of no trade days) and industry group representation.

Barclays US Aggregate Bond Index: The Barclays Capital U.S. Aggregate Bond Index is an unmanaged, market-value-weighted index of taxable investment-grade fixed-rate debt issues, including government, corporate, asset-backed, and mortgage backed securities, with maturities of one year or more.

The **MSCI ACWI Index** is a free float-adjusted market capitalization weighted index that is designed to measure the equity market performance of developed and emerging markets. The MSCI ACWI consists of 46 country indexes comprising 23 developed and 23 emerging market country indexes.

The **MSCI World ex USA Index** captures large and mid cap representation across 22 of 23 Developed Markets (DM) countries excluding the United States. The index covers approximately 85% of the free float-adjusted market capitalization in each country.

The **MSCI Emerging Markets Investable Market Index (IMI)** captures large, mid and small cap representation across 23 Emerging Markets (EM) countries. The index covers approximately 99% of the free float-adjusted market capitalization in each country.

DJ UBS Commodity: The DJ-UBSCI is composed of futures contracts on physical commodities. Unlike equities, which typically entitle the holder to a continuing stake in a corporation, commodity futures contracts normally specify a certain date for the delivery of the underlying physical commodity. In order to avoid the delivery process and maintain a long futures position, nearby contracts must be sold and contracts that have not yet reached the delivery period must be purchased. This process is known as "rolling" a futures position. The DJ-UBSCI is composed of commodities traded on U.S. exchanges, with the exception of aluminum, nickel and zinc, which trade on the London Metal Exchange (LME).

The DJ Equity ALL REIT Index represents all publicly traded real estate investment trusts in the Dow Jones U.S. stock universe classified as Equity REITs according to the Dow Jones REIT Industry Classification Hierarchy. These companies are REITs that primarily own and operate income-producing real estate.

Bond Rates: Fed Funds Target, FactSet; 2-Year Treasury, FactSet; 10-Year Treasury, FactSet; 10-Year Municipal, FactSet; High Yield, FactSet

Commodities: Oil, FactSet; Gold, FactSet; Gasoline, FactSet

Sector Returns: Sectors are based on the GICS Classification model. Return data are calculated by Morningstar Direct using constituents and weights as provided by Standard and Poor's. Returns are cumulative total return for the stated period, including reinvestment of dividends.

Equity Index Characteristics: Price-to-earnings ratio, price-to-book ratio, and price-to-cash flow ratio for S&P 500, S&P MidCap 400, and S&P Small Cap 600 taken from Morningstar Direct and based on a trailing 12-month period. Price-to-earnings ratio, price-to-book ratio, and price-to-cash flow ratio for MSCI ACWI, MSCI World ex USA, and MSCI Emerging Markets Investable Market taken from Morningstar Direct and based on a trailing 12-month period.

Currencies: Dollar per Pound, FactSet; Dollar per Euro, FactSet; Yen per Dollar, FactSet

Opinions and estimates offered constitute our judgment and are subject to change without notice, as are statements of financial market trends, which are based on current market conditions. We believe the information provided here is reliable, but do not warrant its accuracy or completeness. This material is not intended as an offer or solicitation for the purchase or sale of any financial instrument. The views and strategies described may not be suitable for all investors. This material has been prepared for informational purposes only, and is not intended to provide, and should not be relied upon for, accounting, legal or tax advice. References to future returns are not promises or even estimates of actual returns a client portfolio may achieve. Any forecasts contained herein are for illustrative purposes only and are not to be relied upon as advice or interpreted as a recommendation.

The opinions contained in the preceding presentation reflect those of Sterling Capital Management LLC, and not those of BB&T Corporation now Truist Financial Corporation or its executives. The stated opinions are for general information only and are educational in nature. These opinions are not meant to be predictions or an offer of individual or personalized investment advice. They are not intended as an offer or solicitation with respect to the purchase or sale of any security. This information and these opinions are subject to change without notice. All opinions and information herein have been obtained or derived from sources believed to be reliable. Any type of investing involves risk and there are no guarantees. Sterling Capital Management LLC does not assume liability for any loss which may result from the reliance by any person upon such information or opinions.

Investment advisory services are available through Sterling Capital Management LLC, a separate subsidiary of BB&T Corporation now Truist Financial Corporation. Sterling Capital Management LLC manages customized investment portfolios, provides asset allocation analysis and offers other investment-related services to affluent individuals and businesses. Securities and other investments held in investment management or investment advisory accounts at Sterling Capital Management LLC are not deposits or other obligations of BB&T Corporation now Truist Financial Corporation, Branch Banking and Trust Company now Truist Bank or any affiliate, are not guaranteed by Branch Banking and Trust Company now Truist Bank or any other bank, are not insured by the FDIC or any other federal government agency, and are subject to investment risk, including possible loss of principal invested.

Sterling Capital does not provide tax or legal advice. You should consult with your individual tax or legal professional before taking any action that may have tax or legal implications.